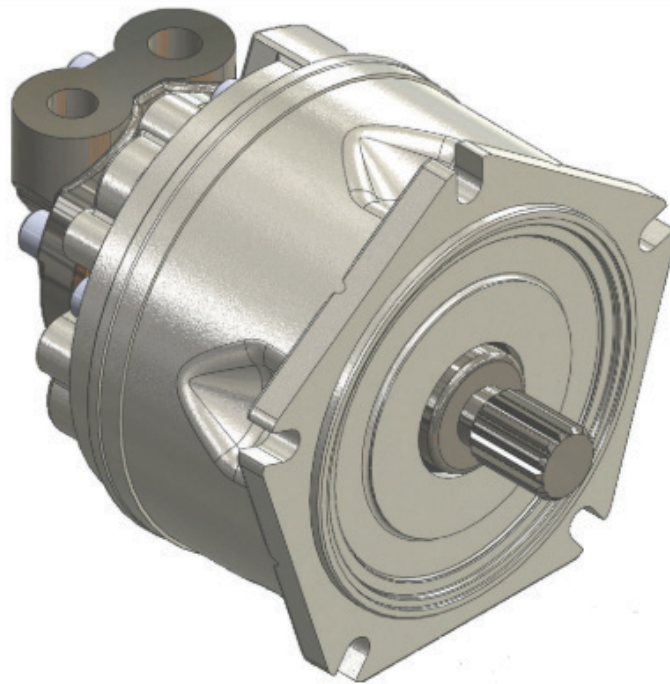


XM05

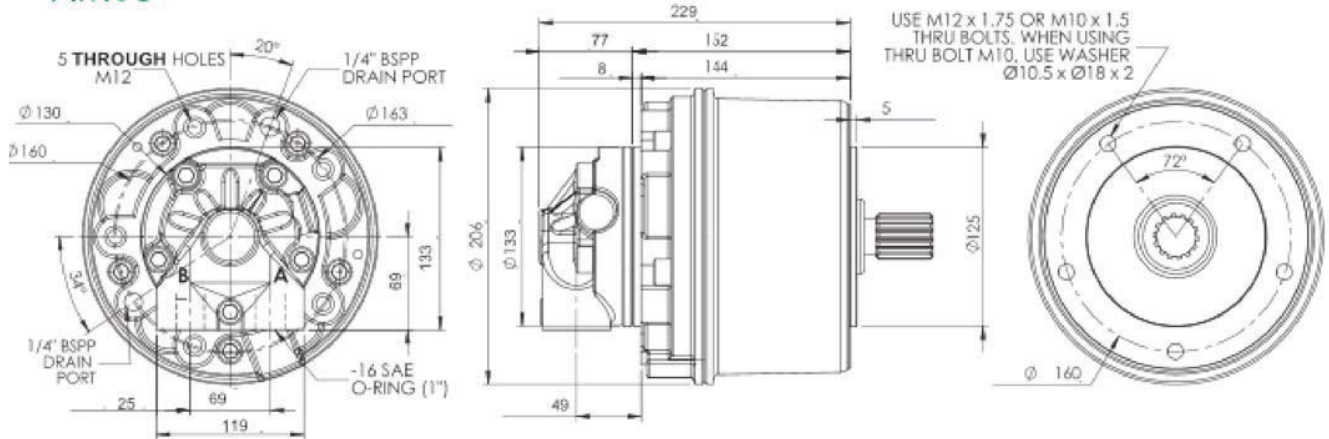


Nominal displacement		75	90	115	150	200	220	250
Displacement	cm ³ /rev	74	85	116	151	191	217	236
Spec. torque	Nm/bar	1.15	1.33	1.80	2.36	2.98	3.39	3.68
Press.rating ¹⁾	bar	250	250	250	250	250	250	250
Peak press.	bar	450	450	400	350	350	350	350
Cont. speed ²⁾	rpm	800	800	700	650	650	600	550
Max. speed ²⁾	rpm	1200	1200	1200	1200	1200	1000	1000
Peak power	kW	45	55	55	55	55	55	55
Peak power	HP	60	74	74	74	74	74	74

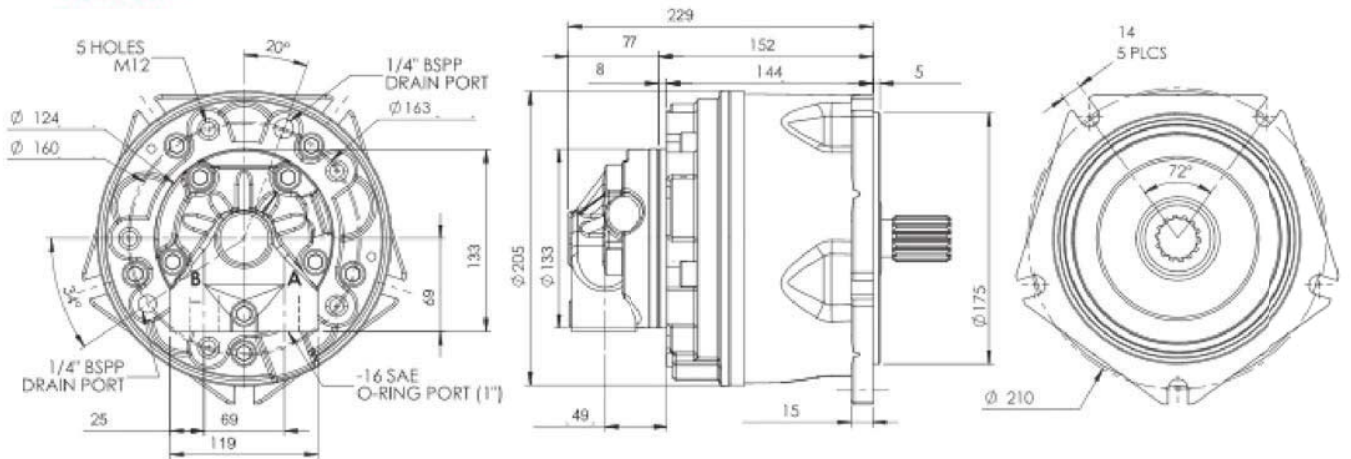
Approximate weight: 24 kg
 Motor casing oil capacity: 0,8 lit
 Max. casing pressure³⁾: 1 bar cont. (5 bar peak)

- 1) Continuous or average working pressure should be chosen on the bearing lifetime choice.
- 2) Speed limitation with optional low speed distributors (eg. D31): cont. 250 rpm, max 500 rpm (see distributor pages section).
- 3) Option "A": cont. pressure 5 bar, peak 15 bar.

XM05

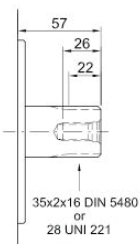


XM05A

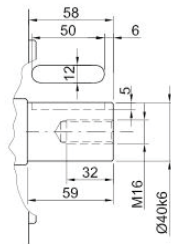


SHAFTS

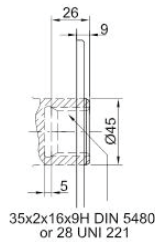
7 : Splined DIN 5480
 1 : Splined UNI 221



8 : Parallel keyed Ø40



9 : Splined DIN 5480
 3 : Splined UNI 221



SPLINE DATA

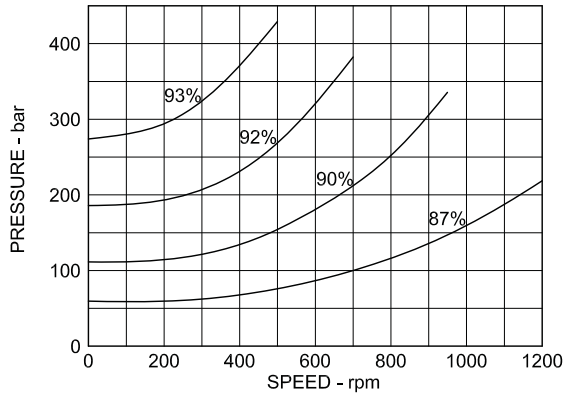
35x2x16 DIN 5480						28 UNI 221 (6-28-34 DIN 5463)			
d0	Ø32					d1	Ø28	^{+0.021} ₀	H7
d1	Ø35	^{+0.52} ₀	H14			d2	Ø34.1	^{+0.16} ₀	H11
d2	Ø31	^{+0.16} ₀	H11			A	7	^{+0.028} _{-0.013}	F7
A	Ø3.5					d3	Ø28	^{-0.007} _{-0.020}	g6
da	Ø27.711		H11			d4	Ø34	^{-0.085} _{-0.160}	h14
d3	Ø34.6	^{+0.16} ₀	h11			B	7	^{-0.013} _{-0.028}	f7
d4	Ø30.6	^{+0.52} ₀	h14						
B	Ø4								
db	Ø39		f8						

Note:

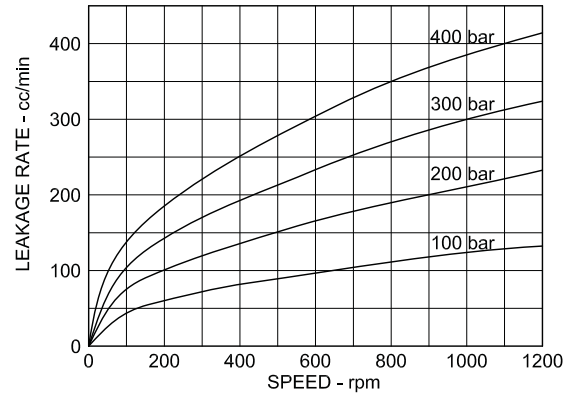
XM05 is supplied with centering dia. mm 125 and fixing by 5 M12 through holes on 160 mm dia.
XM05A is supplied with centering dia. mm 175 and fixing by 5 slots dia. 14mm on 210 mm dia.

The graphs indicate the typical performance characteristics of the 150 cc motor operating with mineral oil with viscosity 40 cSt at 50 °C.

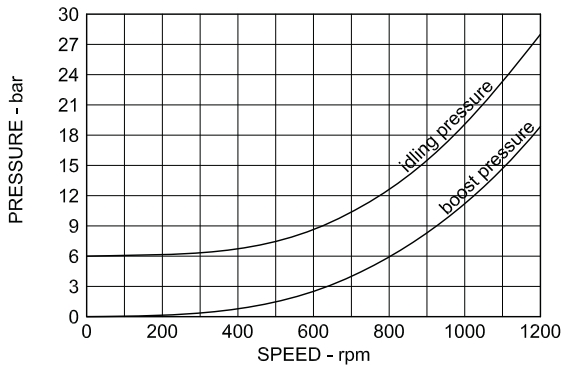
MECHANICAL EFFICIENCY



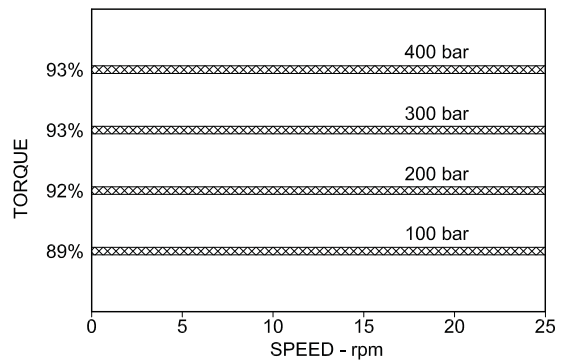
VOLUMETRIC EFFICIENCY



IDLING AND BOST PRESSURE

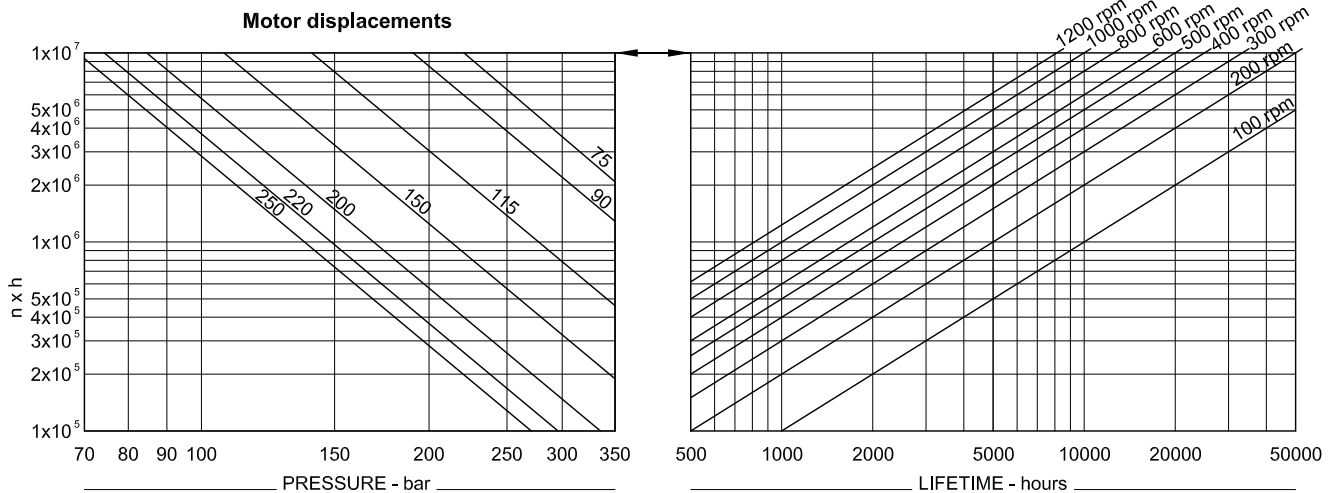


STARTING AND LOW SPEED TORQUE



BEARING LIFETIME

Graph refers to XM05 motor with standard spherical roller bearings.



ORDER CODES

XM05 (1) (2) (3) (4) + (5) (6) ; (7) (8)

MOTOR CODE

1. Nominal displacement - see motor spec. table.

2. Shaft option:

- 7 = male 35-2-16 DIN 5480 (std)
- 1 = male 28 UNI 221
- 9 = female 35-2-16 DIN 5480
- 3 = female 28 UNI 221
- 8 = cylindrical keyed Ø40x58

3. Bearings:

spherical roller bearings

4. Other options:

- U = without shaft seal
- A = high pressure shaft seal
(5 bar cont., 15 bar peak)
- SV = stainless steel shaft sleeve
corr. protect. for shaft seal
- V = Vytan seals
- I = case press. relief valve 3 bar

DISTRIBUTOR CODE

5. Distributor: D40 standard

6. Tachomet.: K = predisposed for tachometer
J = with tachometer coupling

ASSEMBLY CODES

7. Direction of shaft rotation: standard motors are supplied with clockwise rotation (viewed from shaft end) with flow in port A, out port B.

- R = clockwise rotation
- L = anti-clockwise rotation

8. Distributor cover position: see page 3

- no code = position DM1
- DM . , = other position