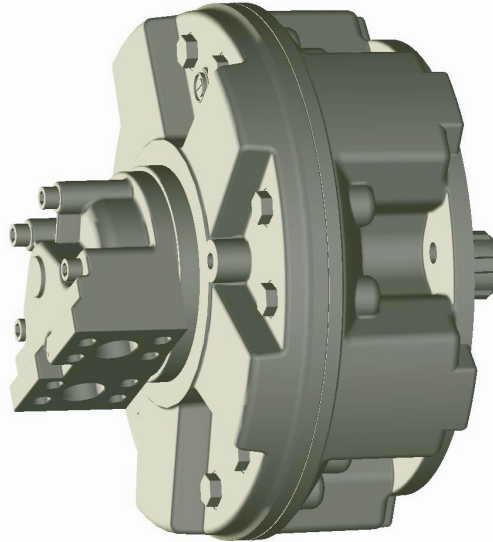


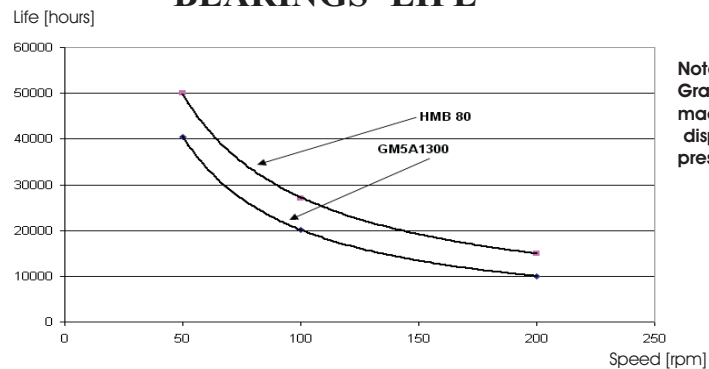
## MOTORS' INTERCHANGEABILITY SAI GM5A -KAWASAKI HMB 80



### PERFORMANCES TABLE

		GM5A										HMB			
		2000	1800	1600	1450	1300	1200	1000	800	650	525	80			
Displacement/ cilindrata	[cc/rev]	2007	1816	1634	1462	1340	1185	1039	807	659	526	1344	1250	1100	1000
Specific Torque/ Coppia Specifica	[Nm/bar]	29.39	26.59	23.925	21.407	19.621	17.3511	15.21	11.82	9.649	7.7	19.9	18.5	16.4	14.8
Pressure Rating/ Press.Nominale	[bar]	250										250			
Peak Pressure/ Pressione di Picco	[bar]	350	350	375	375	400	400	425	425	450	450	275			
Cont. Speed/Velocità cont	[rpm]	250	250	250	275	300	300	300	325	350	350	300	360	415	450
Peak Power/Potenza di Picco	[kW]	120										100	100	100	95

### BEARINGS' LIFE



Note:  
Graph comparison has been made considering motors with similar displacement and at an alignment pressure level equal to 200 [bar]

Approximate weight: 170 kg  
 Motor casing oil capacity: 10 lit  
 Max. casing pressure: 1 bar continuous  
 5 bar peak

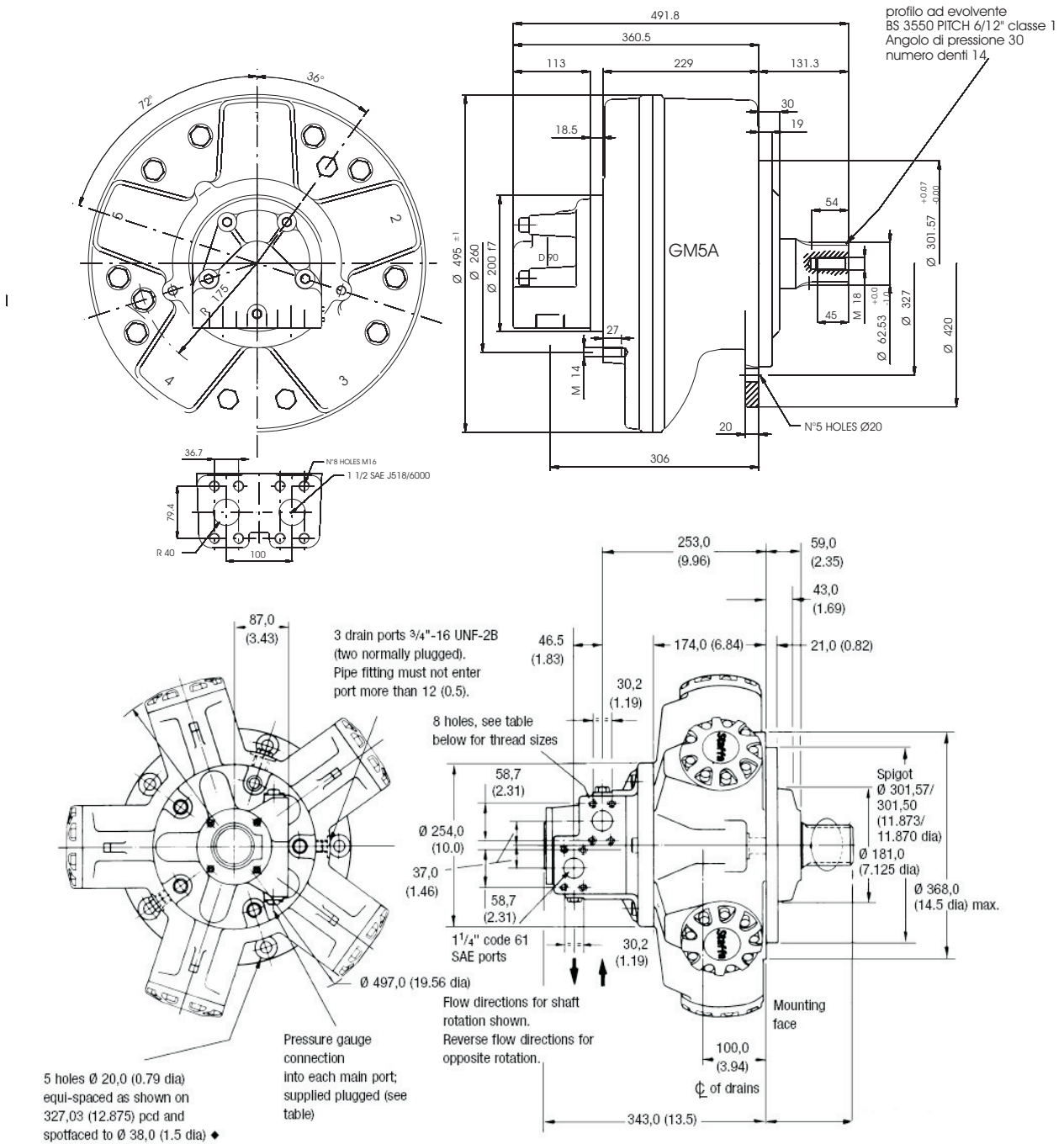
Peso approssimativo: 170 kg  
 Capacità olio corpo motore: 10 lit  
 Pressione max. carcassa: 1 bar continuo  
 5 bar picco

1) Continuous or average working pressure should be chosen in function of the bearing lifetime.

1) La pressione continua o media di lavoro va determinata in funzione della vita dei cuscinetti.



## DIMENSIONAL DRAWINGS



## SHAFT OPTIONS

