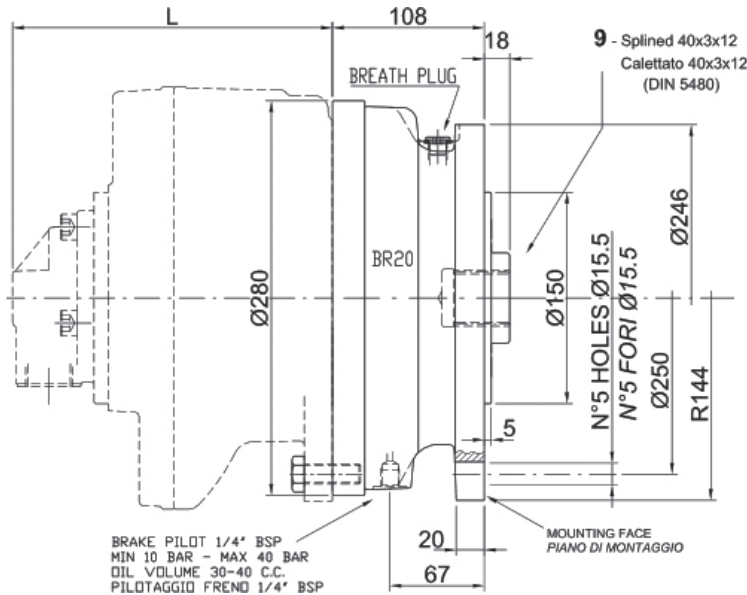


# BR20 SPRING LOADED NEGATIVE DISC BRAKE



MOTOR TYPE **L**  
TIPO MOTORE

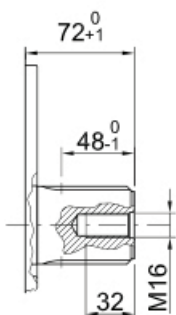
GM1	221*
GM2	247*
GM3	269*

\*= with D40 distributor  
con distributore D40

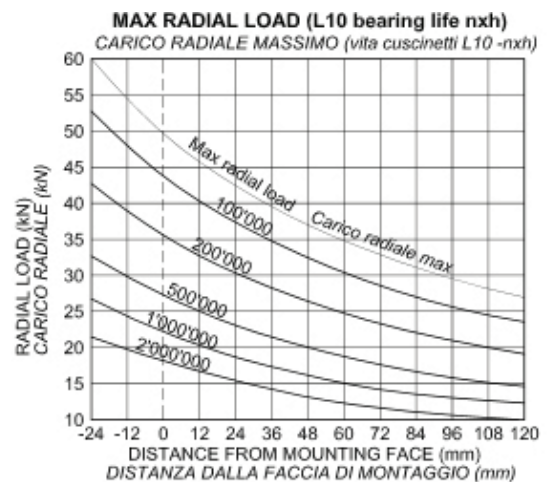
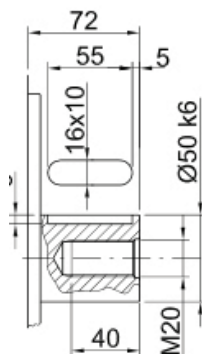
BRAKE MODEL	800	BR20
STATIC TORQUE	Nm	1600
MIN. OPENING PRESSURE	bar	20
MAX OPENING PRESSURE	bar	40
DRY MASS	Kg	10
LUBRICATION OIL QUANTITY	cm <sup>3</sup>	50
PILOT OIL QUANTITY	cm <sup>3</sup>	
STATIC TORQUE IS TAKEN AT 0 BAR INTERNAL PILOT PRESSURE		

## Shaft options

Splined 55-3-17



Cylindrical



(nxh: Product of shaft speed n in rpm, and life h in hours, ISO L10)  
(nxh: Prodotto della velocità albero n in rpm per la durata h in ore)